

Mike Humber

Faculty Research Assistant

University of Maryland, Department of Geographical Sciences
mhumber@umd.edu

- Web GIS development
- Enterprise GIS
- Data collection (web and mobile)
- Remote sensing
 - Burned area mapping
 - Agricultural monitoring



GeoODK Collect

Data Collection & Mapping



Collect Data



Send Data



Edit Data



Map Data



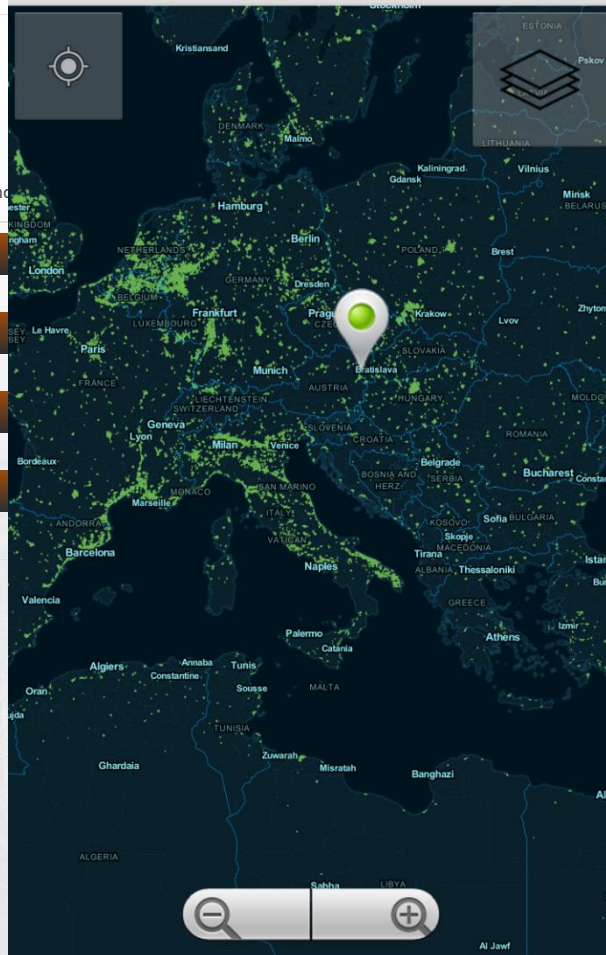
Delete Data



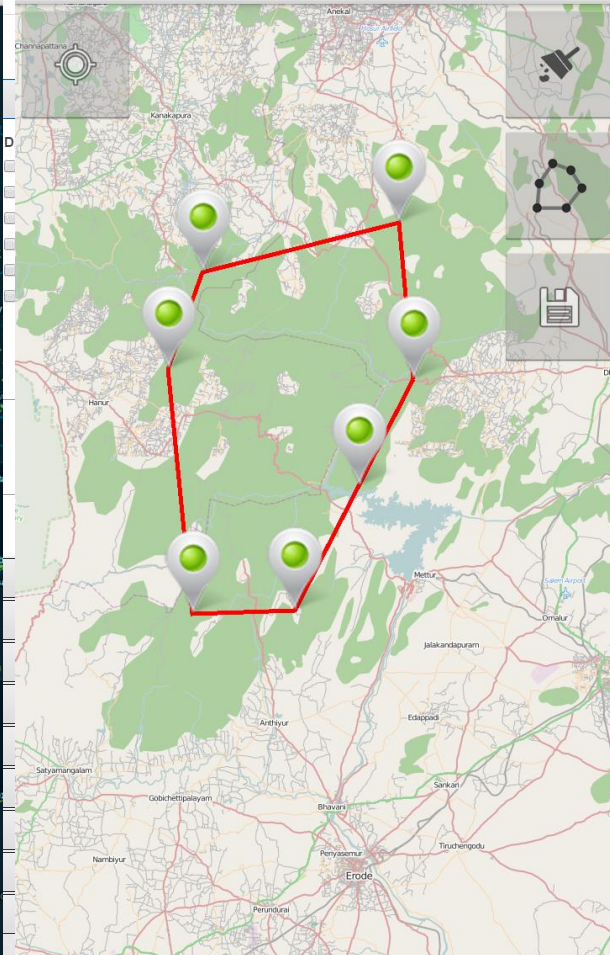
Settings



GeoODK Collect > Mapping



LONG CLICK to Create Point



Long-term Goals

- Move towards on-the-fly analysis of Web GIS data
 - Dynamic, interactive graphing tools
- Increase data accessibility
 - Open Data Portal?
- Continue development on data collection software
 - Products rely on projects for continued development
 - Applications can be customized for specific uses
 - Considerations to protect identity