

# Demian Rybock, GISP

Faculty Research Assistant (Tatiana Loboda)

University of Maryland, Dept. of Geographical Sciences

<http://geog.umd.edu/facultyprofile/Rybock/Demian>

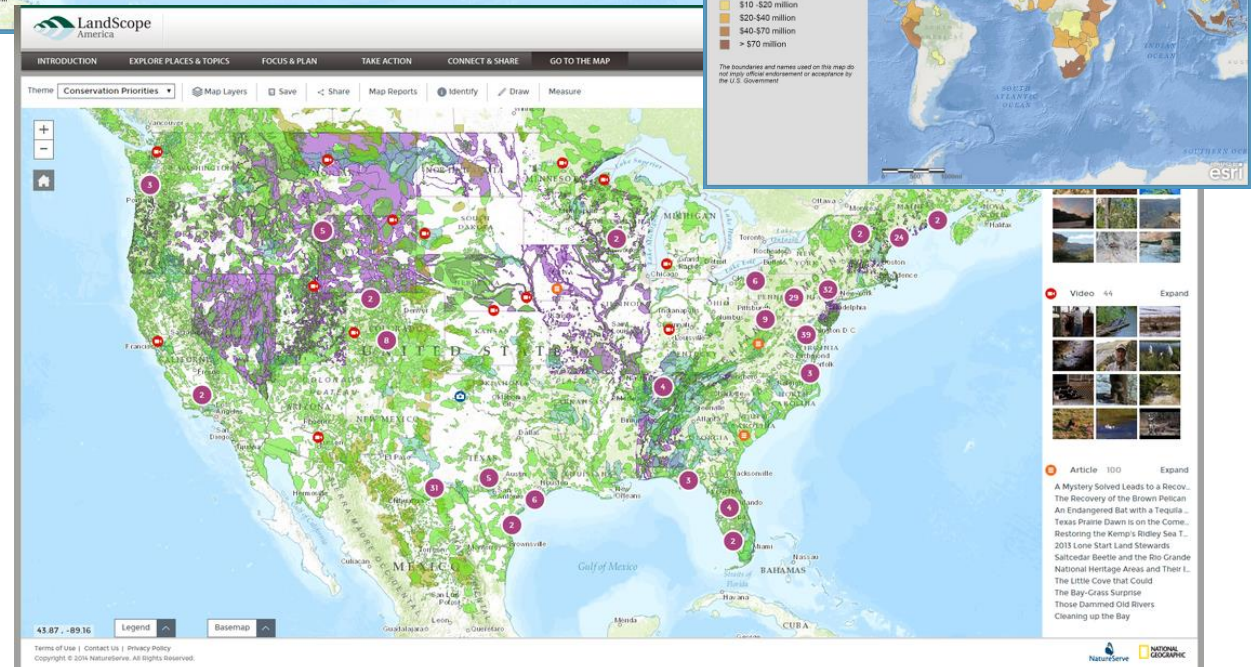
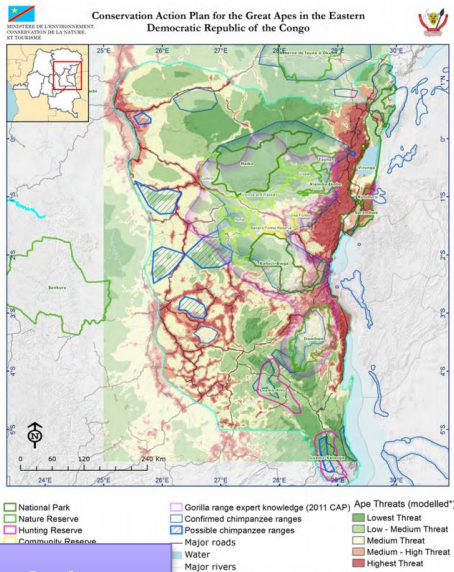
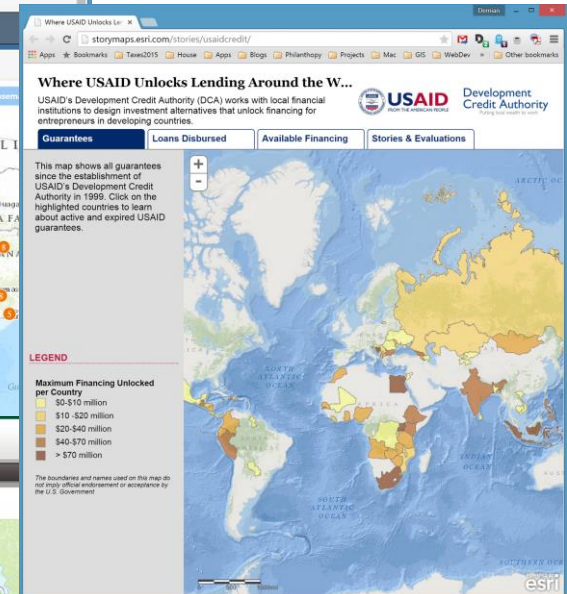
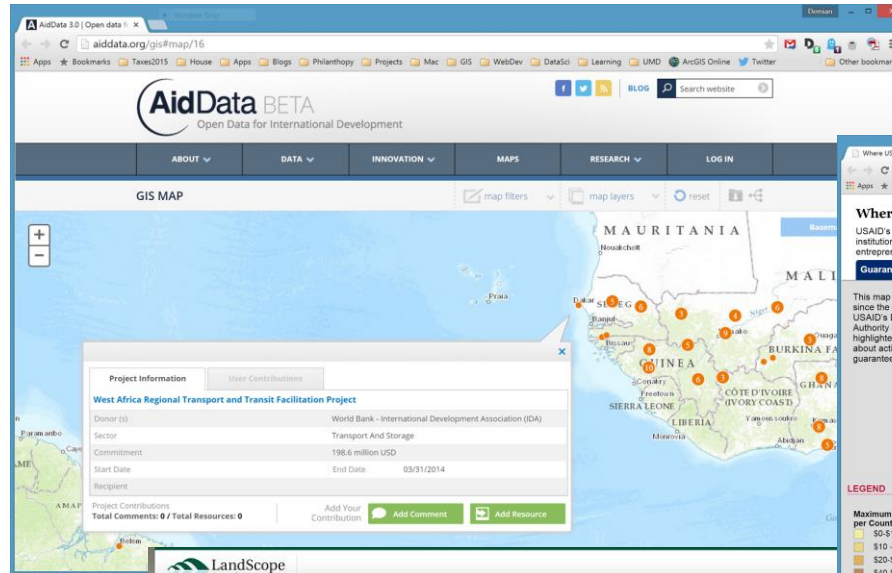
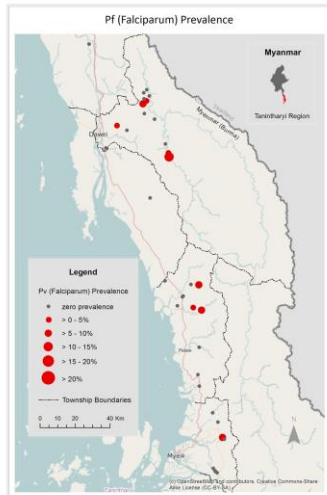


Assess and implement  
Geographic Information  
Systems (GIS) solutions for  
**international development &  
biodiversity conservation**  
organizations, 10 years

- Visualization
- Spatial Analysis
- Data Management
- Web Map Applications
- Collaboration
- Capacity Building



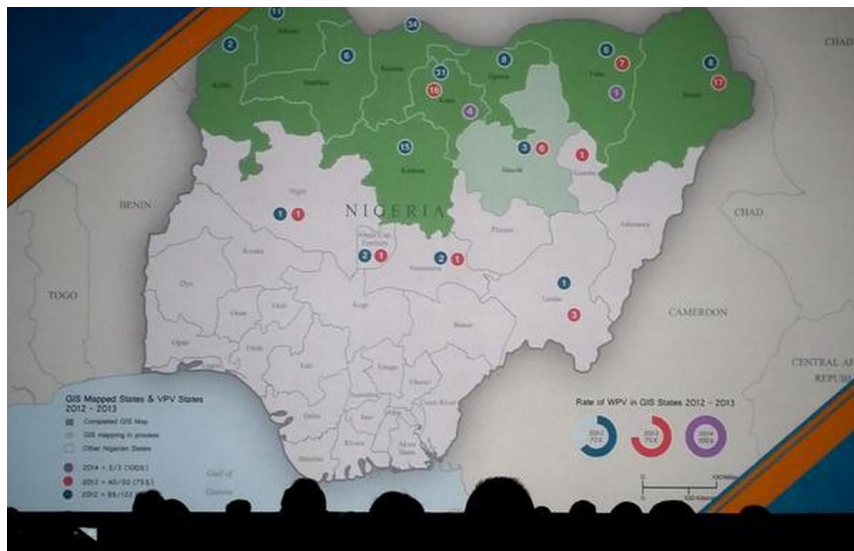
# Data Visualization and Spatial Analysis





# Assess GIS needs and suggest strategies and solutions

**Develop web and mobile GIS applications** that support operational requirements to track, predict and manage pandemics and epidemics, and improve patient care, treatments, and interventions.



## Ebola Outbreaks 1976-2014

Explore this interactive story map developed by Esri UK showing the history of Ebola since the first known case in 1976.

For media inquiries, contact us at [newsmaps@esri.com](mailto:newsmaps@esri.com).

Fullscreen

